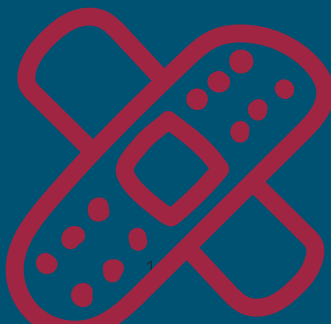
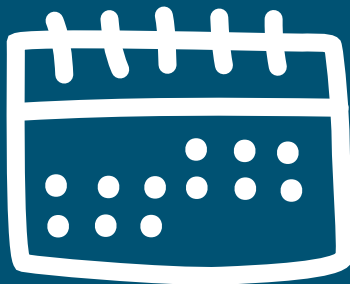


Your 2026 Healthcare Benefit Guide

City of Baltimore



With Care,

CareFirst  

ETHISPHERE[®]
WORLD'S MOST
ETHICAL
COMPANIES[®]
2013 - 2025

Recognized as one of the
World's Most Ethical Companies[®]

"World's Most Ethical Companies" and "Ethisphere" names and marks are registered trademarks of Ethisphere LLC.

Welcome

We're glad you're considering CareFirst BlueCross BlueShield (CareFirst). We know there's a lot of information to review when selecting your health plan. We hope this simplified guide provides information that makes choosing CareFirst an easy decision.

Inside, you'll find information that'll help you select the plan that's best suited to your needs. Whichever plan you choose, you'll have coverage that's recognized and accepted by more top doctors than any other network. Plus, you'll know that you have the support of a team that's working everyday to improve the healthcare experience of every member.

High Option Plan

High Option BlueChoice Advantage



Plan has no annual deductible



Lower per visit copays for most services

Standard Option Plan

Standard Option BlueChoice Advantage



Plan has an annual deductible



Higher per visit copays and coinsurance



Your Open Enrollment dates are September 29 through October 10, 2025.



What's inside?

- 3 Welcome
- 3 High Option Plan
- 3 Standard Option Plan
- 4 What's inside?
- 5 Narrow your choices
- 6 Medical plan highlights
- 7 Perks included with every plan
- 8 With CareFirst, you get so much more
- 9 So many options for when you need care
- 10 CareFirst WellBeing
- 11 Find a doctor
- 11 My Account benefits
- 11 Treatment Cost Estimator
- 12 Away From Home Care®
- 12 BlueCard and Blue Cross Blue Shield Global® Core
- 13 Mental and behavioral health support
- 14 Next steps

It helps to understand some key terms



CareFirst member cost: The maximum amount providers can charge CareFirst members for a specific service.

Deductible: Depending on your plan, you'll need to pay for some services on your own until you reach your deductible. Then your plan starts helping with the cost of your care.

Out-of-pocket maximum: The most you'll pay for covered services in a plan year. After you spend this amount on care costs, your plan will pay 100% of the CareFirst member costs for the rest of the plan year.

The personas represented in this decision guide are not real. The personas and quotes are used for illustrative purposes only.

Narrow your choices

To help narrow your choices, answer these questions:

Do you prefer a plan with predictable, low copays for most services?

 YES NO

Does your family typically only see your doctors for checkups and annual exams?

 YES NO

Would you prefer a plan with no deductible?

 YES NO

Do you prefer a plan with a deductible and coinsurance for most services?

 YES NO

Do you, or a family member, have a medical condition that requires regular doctor visits?

 YES NO

High Option

If most of the answers you checked are orange, the High Option plan may be more your style. This is a good plan for people who:

- Use their health or pharmacy benefits more frequently
- Have a planned medical procedure, pregnancy, etc.
- Prefer to have predictable, low copays for most services
- Prefer a plan with \$0 deductible

Standard Option

If most of the answers you checked are blue, the Standard Option plan may be the best fit. This plan is good for people who:

- Are healthy and don't use their health benefits frequently
- Don't mind the flexibility of coinsurance for most services
- Are comfortable with having to meet a plan deductible for some services

Medical plan highlights

Let's compare some of your in-network costs for common services with these plans.

	High Option	Standard Option
Costs to consider		
In-network Deductible You'll pay the full CareFirst member cost for some services until you reach your deductible	\$0	\$250 individual/ \$500 family
Out-of-pocket Maximum The most you'll pay for covered in-network services in a plan year	\$1,000 individual/ \$2,000 family	Annual Salary < \$45,000/year: \$1,000 individual/ \$2,000 family Annual Salary > \$45,000/year: \$1,500 individual/ \$3,000 family
Plan Includes Out-of-network Coverage	Yes	Yes
Staying healthy		
Annual Physical Exam	\$0 per visit	\$0 per visit
Preventive Screenings and Immunizations	\$0 per visit	\$0 per visit
Well-Child Care (including exams & immunizations)	\$0 per visit	\$0 per visit
Feeling under the weather?		
Primary Care Provider (PCP)	\$5 per visit	\$25 per visit
Specialist (e.g. Dermatologist)	\$5 per visit	\$40 per visit
Mental Health Professional—Office	\$5 per visit	\$25 per visit
Urgent Care	\$5 per visit	\$25 per visit plus 10% of the CareFirst member cost
Emergency Room	\$50 per visit (waived if admitted)	10% of the CareFirst member cost per visit
Following doctor's orders?		
Allergy Shots	\$0 per visit	10% of the CareFirst member cost per visit
Imaging (MRA/MRS, MRI, PET, CT Scans) (non-hospital facility)	\$0 per visit	10% of the CareFirst member cost per visit
Labs and X-rays (non-hospital facility)	\$0 per visit	10% of the CareFirst member cost per visit
Physical, Speech and/or Occupational Therapy	\$0 per visit	10% of the CareFirst member cost per visit
Chiropractic	\$0 per visit	10% of the CareFirst member cost per visit
Outpatient Surgery (surgical center)	\$0 per visit	10% of the CareFirst member cost per visit
Inpatient Surgery (including maternity)	\$0 per visit	10% of the CareFirst member cost per visit
Artificial and Intrauterine Insemination and In Vitro Fertilization Procedures	\$0 per visit	10% of the CareFirst member cost per visit

Costs shown are for care received in-network and, except for emergency room, at non-hospital locations. See your Summary of Benefits for limitations and plan details.

Perks included with every plan



Achieve your well-being goals with the help of programs for weight management, tobacco cessation and more



Enjoy exclusive discounts through our Blue365 program on things like fitness gear, gym memberships, meal delivery services, hotels and travel



Get inspired to be your healthiest by completing fun activities through your well-being program



Pay nothing for annual in-network preventive care and 24-Hour Nurse Advice Line

"I take advantage of the hotel discounts through Blue365 "



"I lost 30 lbs. with the help of my coach and the Nook program."



"I like knowing I can call the 24-hour nurse line at any time."



With CareFirst, you get so much more

Unmatched access

With 95% of national providers¹ and 99% of local providers² within our Blues network, you have the **broadest access to care**.

Comprehensive care

Our comprehensive care approach meets you where you are, ensuring you have a consistent, whole health experience that helps you better manage your **physical, emotional, social and financial well-being**.

Local expertise

Our extensive and long-standing local relationships give you **unparalleled access to providers and community organizations**, resulting in enhanced care coordination and improved health outcomes.

Innovative member solutions

Beyond health coverage, you have access to our **comprehensive portfolio of best-in-class member solutions** to help you achieve your best health in all stages of life, health and conditions.



1 in 2 americans are covered by Blue regionally, 1 in 3 nationally³



Most chosen health plan in the Mid-Atlantic, serving 3.5 million members



A not-for-profit company driven by mission



Access to 1.7 million U.S. providers⁴



CareFirst is proud to be recognized as one of the World's Most Ethical Companies® for 13 consecutive years.



¹ CHP Network Compare Findings, Q3 2017

² CareFirst Book of Business Data, August 2020

³ BCBSA Blue Facts, February 2022

⁴ Provider Data Repository (PDR), January 2021

So many options for when you need care

Establishing a relationship with a primary care provider (PCP) is the best way to receive consistent, quality care. But when life makes that difficult, CareFirst offers so many other ways to get the care you need.

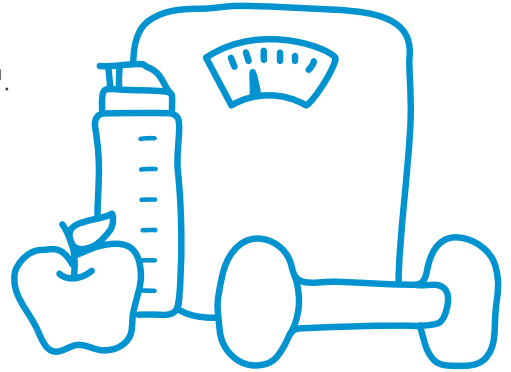
	Needs or symptoms such as:	Virtual option
CloseKnit Virtual Care		
CloseKnit offers 24/7/365 virtual-first primary care, urgent care*, mental health and other specialty services. <i>* Primary care available to members and dependents ages 18+; Urgent care available to members and dependents ages 2+</i>	<ul style="list-style-type: none"> ■ Cough, cold and flu ■ Urgent care needs ■ Illness while traveling ■ Therapy ■ Psychiatry, lactation and nutrition services ■ Medication questions ■ Insurance or coverage questions 	✓
24-Hour Nurse Advice Line		
Call 800-535-9700 for general questions about health issues or where to go for care	<ul style="list-style-type: none"> ■ Cough, cold and flu ■ Rashes ■ Medication questions 	✓
PCP Visit		
Discuss diagnosis, treatment of illness, chronic conditions, routine check-ups	<ul style="list-style-type: none"> ■ Routine physical ■ Diabetic care ■ Cough, cold, flu, allergies ■ Bronchitis 	✓
Convenience Care Centers		
<i>(e.g., CVS MinuteClinic)</i> Health screenings, vaccinations, minor illness or injury	<ul style="list-style-type: none"> ■ Cough and cold ■ Pink eye ■ Ear pain ■ Flu shot 	✗
Urgent Care Centers		
Non-life-threatening illness or injury requiring immediate care	<ul style="list-style-type: none"> ■ Sprains ■ Cut requiring stitches ■ Minor burns ■ Sore throat 	✗
Emergency Room Visit		
Life-threatening illness or injury	<ul style="list-style-type: none"> ■ Chest pain ■ Difficulty breathing ■ Uncontrolled bleeding ■ Major burns 	✗

CloseKnit is a registered trademark owned by, and is the trade name of, Atlas Health, LLC. Atlas Health, LLC d/b/a CloseKnit provides telehealth services to CareFirst BlueCross BlueShield members.

PLEASE READ: The information provided in this document regarding various care options is meant to be helpful when seeking care and is not intended as medical advice. Only a medical provider can offer medical advice. The choice of provider or place to seek medical treatment belongs entirely to you.

CareFirst WellBeing

Live your healthiest life with CareFirst WellBeingSM. Access motivating digital resources anytime, plus specialized programs for extra support—at no cost to you—including:



- **RealAge[®]:** Discover if your healthy habits are making an impact by taking the RealAge health assessment.
- **Health coaching:** Get one-on-one confidential support from trained professionals to achieve your best health.
- **Lifestyle coaching:** Identify opportunities to improve your daily health, from managing stress to eating healthy and being active.
- **Disease management:** Get help to better understand and manage your chronic or complex condition.
- **Tobacco cessation:** Learn how to recognize and avoid tobacco cravings and habits with our voluntary and confidential 21-day program, Craving to Quit.
- **Financial well-being:** Whether you want to stop living paycheck to paycheck, get out of debt, or send a child to college, our financial well-being program, SmartDollar, can help.
- **Weight management programs:¹** Reach a healthier weight and reduce the risk of developing type 2 diabetes with the following programs:
 - **Noom weight management:** Gain confidence to make lasting change with this award-winning weight loss program designed by psychologists.
 - **Noom diabetes prevention program (DPP):** Access tracking tools, peer support and specially trained coaches to help lower the risk of diabetes.
 - **Eat Right Now:** Change your eating patterns with this 12-month program that combines neuroscience and mindfulness tools.
- **Inspirations:** Break free from stress, unwind at the end of the day or ease into a restful night of sleep with meditation, streaming music and videos.

Exciting, personalized programs—from physical fitness and family relationships to stress management and financial health—can help you, and your family, address every aspect of your well-being.



¹ To join Noom or Eat Right Now, members need to meet clinical eligibility criteria through an online assessment. Noom is an app-based program. Eat Right Now is app-based and available on the web.

Eat Right Now is administered by Sharecare, Inc. and Noom is administered by Noom, Inc., independent companies that provide health improvement management services to CareFirst members. Sharecare, Inc. and Noom do not provide CareFirst BlueCross BlueShield products or services and are solely responsible for the health improvement management services they provide.

Find a doctor

CareFirst has one of the world's largest networks of participating providers—over one million in all. Whether you're looking for a primary care physician, a specialist or a care facility, we can help you find one that's right for you. Our simple Find-a-Doctor tool helps you select the right healthcare at the right place.

Try it for yourself. Visit carefirst.com/doctor. You'll be able to search by name, location, specialty and a host of other options. You can even find participating doctors and facilities outside of the U.S.



My Account benefits

Your member portal is personalized to you and your CareFirst benefits. Stay on top of your health with easy access to everything you need to understand your coverage, find care at the best price, and track your claims and deductibles at your fingertips. With My Account, you can:

- Find in-network doctors, urgent care centers and other care—nationwide
- View, order or email member ID cards
- Check claims and deductible status
- Update communication preferences and password
- Quickly access a variety of CareFirst member programs
- Send a secure message for members

Treatment Cost Estimator

Our Treatment Cost Estimator shows you what you'll pay for procedures, doctor's office visits, lab tests and surgery beforehand, so you can plan ahead and avoid surprises.



- Receive personalized estimates based on your plan
- Compare costs from different doctors and facilities

Away From Home Care®

When you're away from home for 90 consecutive days or more, we've got you covered with our Away From Home Care program.

- You can see any affiliated Blue Cross Blue Shield HMO (Host HMO) provider when you are outside the CareFirst service area.
- You'll be considered a member of the Host HMO and receive care under their plan. Your cost may be different than when you're in the CareFirst service area.
- Once you're enrolled in the program and receive care, you don't have to complete claim forms, so there's no paperwork. And you're only responsible for out-of-pocket costs such as copays, deductibles, coinsurance and the cost of non-covered services.

Whether you're out-of-town on extended business, traveling or going to school out-of-state, you have access to routine and urgent care.



BlueCard and Blue Cross Blue Shield Global® Core

With your Blue Cross and Blue Shield member ID card, you have access to doctors and hospitals almost anywhere. BlueCard gives you the peace of mind that you'll always have the care you need when you're away from home. And with Blue Cross Blue Shield Global® Core (BCBS Global® Core), you have access to care in more than 190 countries.

BlueCard

- You'll have access to local Blue Cross Blue Shield Plan doctors and hospitals when you're outside the CareFirst service area.
- You'll be considered a member of the local BCBS plan when you receive care. Your cost may be different than when you're in the CareFirst service area.
- For care received in-network, you don't have to complete claim forms, so there's no paperwork.

BCBS Global® Core

- In most cases, you shouldn't have to pay up front for inpatient care at hospitals in the BCBS Global Core Network.
- At hospitals outside the BCBS Global Core Network, you pay the doctor or hospital for inpatient care, outpatient hospital care and other medical services. You then complete an international claim form for reimbursement.

Mental and behavioral health support

As a CareFirst member, you have 24/7 access to a range of programs for depression, anxiety, drug or alcohol dependencies and other mental health conditions, including:

- **CloseKnit**—access our leading virtual care practice through a simple, convenient app. CloseKnit providers can assess behavioral health needs to help you connect with therapists and psychiatrists.
- **Substance Use Support**—get clinical counseling 24/7, or schedule substance use disorder treatment for you or a loved one within 48 hours.
- **Care Navigation**—talk to a Behavioral Health Care Manager who can help you find a path forward. LGBTQ+ members can contact our dedicated services specialist for help navigating care and understanding benefits.

To learn more about all the free mental and behavioral support available, visit carefirst.com/mentalhealth.

You're never alone. If you or someone you know is in crisis, call or text 988 or contact the CareFirst support line at 800-245-7013.



"We all struggle at times, so knowing there are so many options my teens can turn to for help is a huge relief."

Next steps

Ready to enroll?

- Visit <http://workday.baltimorecity.gov/login> or call **410-396-5830** from September 29–October 10, 2025

Not ready to choose your plan just yet?

Review your options with Alex.

Jelly Vision is here to help during the Open Enrollment period as well as Ongoing Enrollment when applicable. Active employees and retirees can always interact online with Alex, the virtual benefits counselor. Alex will help you make smarter healthcare decisions that may save you time and money by answering a series of health-related questions.

Alex walks you through the process of picking your best benefits and provides easy to understand explanations for any questions you might have along the way. Prepare to make the best benefits decision with Alex at <https://start.myalex.com/cityofbaltimore>.



**Don't worry—
you have until
October 10, 2025
to make or change
your plan selection.**



We're here to help! If you have additional questions, please call 410-396-5830, Monday–Friday 8:30 a.m. to 4:30 p.m.

Important Medicare Information

The City requires all its members (including you and your dependents) to enroll in Medicare Part B at the time you become eligible for Medicare Part A in order to receive the maximum possible benefit from Baltimore City's medical plan. Once enrolled in Medicare Part B, you must remain enrolled in order to continue receiving the maximum possible benefit from the City's plan.

Under the Medicare Secondary Payer (MSP) Mandatory Reporting Provision and the Affordable Care Act (ACA) Individual Shared Responsibility Reporting Provision, the federal law requires the mandatory collection and reporting of social security numbers of all covered participants including employees, retirees and their dependents through employer group health plans. Noncompliance may result in the loss of coverage for participants with invalid or missing social security numbers.

Notice of Nondiscrimination and Availability of Language Assistance Services

CareFirst BlueCross BlueShield, CareFirst BlueChoice, Inc., CareFirst Diversified Benefits and all of their corporate affiliates (CareFirst) comply with applicable federal civil rights laws and do not discriminate on the basis of race, color, national origin, age, disability or sex. CareFirst does not exclude people or treat them differently because of race, color, national origin, age, disability or sex.

CareFirst:

- Provides free aid and services to people with disabilities to communicate effectively with us, such as:
 - Qualified sign language interpreters
 - Written information in other formats (large print, audio, accessible electronic formats, other formats)
- Provides free language services to people whose primary language is not English, such as:
 - Qualified interpreters
 - Information written in other languages

If you need these services, please call 855-258-6518.

If you believe CareFirst has failed to provide these services, or discriminated in another way, on the basis of race, color, national origin, age, disability or sex, you can file a grievance with our CareFirst Civil Rights Coordinator by mail, fax or email. If you need help filing a grievance, our CareFirst Civil Rights Coordinator is available to help you.

To file a grievance regarding a violation of federal civil rights, please contact the Civil Rights Coordinator as indicated below. Please do not send payments, claims issues, or other documentation to this office.

Civil Rights Coordinator, Corporate Office of Civil Rights

Mailing Address	P.O. Box 14858 Lexington, KY 40512
Email Address	civilrightscordinator@carefirst.com
Telephone Number	410-528-7820
Fax Number	410-505-2011

You can also file a civil rights complaint with the U.S. Department of Health and Human Services, Office for Civil Rights electronically through the Office for Civil Rights Complaint portal, available at <https://ocrportal.hhs.gov/ocr/portal/lobby.jsf> or by mail or phone at:

U.S. Department of Health and Human Services
200 Independence Avenue, SW
Room 509F, HHH Building
Washington, D.C. 20201
800-368-1019, 800-537-7697 (TDD)

Complaint forms are available at <http://www.hhs.gov/ocr/office/file/index.html>.

Attention (English): This notice contains information about your insurance coverage. It may contain key dates and you may need to take action by certain deadlines. You have the right to get this information and assistance in your language at no cost. Members should call the phone number on the back of their identification card. All others may call 1-855-258-6518 and wait through the dialogue until prompted to push 0. When an agent answers, state the language you need and you will be connected to an interpreter.

ማሳሰቢያ (Amharic):- ይህ ማሳወቂያ ስለ ኢንሹራንስ ሽፋንዎ መረጃ ይዟል። ቁልፍ ቀናትን ሊይዝ ይችላል እና በተወሰኑ የግዜ ገደቦች እርምጃ መውሰድ ለኖርብዎ ይችላል። ይህን መረጃ እና እገዛ ያለ ምንም ወጪ በቋንቋዎ የማግኘት መብት አለዎት። አባላት በአባላት መታወቂያ ካርዳቸው ጀርባ ወዳለው ስልክ ቁጥር መደወል አለባቸው። ሌሎች በሙሉ ወደ 855-258-6518 በመደወል 0ን እንዲጫኑ እስኪጠየቁ ድረስ ምልልሱን መጠበቅ ይችላሉ። አንድ ወኪል ሲመልስ፣ የሚፈልጉትን ቋንቋ ይግለጹ እና ከአስተርጓሚ ጋር ይገናኛሉ።

انتبه (Arabic): يحتوي هذا الإشعار على معلومات حول تغطيتك التأمينية. قد يحتوي على تواريخ رئيسية وقد تحتاج إلى اتخاذ إجراء بحلول مواعيد نهائية معينة. لديك الحق في الحصول على هذه المعلومات والمساعدة بلغتك دون أي تكلفة. يجب على الأعضاء الاتصال برقم الهاتف الموجود على ظهر بطاقة هوية العضوية الخاصة بهم. يمكن للأخريين الاتصال بالرقم 855-258-6518 والانتظار طوال الحوار حتى يُطلب منهم الضغط على الرقم 0. عندما يجيبك أحد الوكلاء، حدد اللغة التي تحتاجها وسيتم توصيلك بمترجم فوري.

মনোযোগ দিন (Bengali): এই বিজ্ঞপ্তিতে আপনার বীমা কভারেজ সম্পর্কে তথ্য রয়েছে। এতে গুরুত্বপূর্ণ তারিখগুলি থাকতে পারে এবং আপনাকে হয়ত নির্দিষ্ট সময়সীমার মধ্যে পদক্ষেপ নিতে হতে পারে। আপনার ভাষায় বিনামূল্যে এই তথ্য এবং সহায়তা পাওয়ার অধিকার আপনার আছে। সদস্যদের তাদের সদস্য পরিচয়পত্রের পিছনে দেওয়া ফোন নম্বরে কল করা উচিত। অন্যরা 855-258-6518 নম্বরে কল করতে পারেন এবং 0 চাপ দেওয়ার জন্য অনুরোধ না করা পর্যন্ত সংলাপের জন্য অপেক্ষা করতে পারেন। যখন একজন এজেন্ট উত্তর দেবেন, তখন আপনার প্রয়োজনীয় ভাষাটি বলুন এবং আপনাকে একজন দোভাষীর সাথে সংযুক্ত করা হবে।

注意 (Chinese) : 此通知包含有關您的保險範圍的資訊。它可能包含關鍵日期，您可能需要在特定截止日期之前採取行動。您有權免費以您的語言獲取此資訊和協助。會員應撥打會員證背面的電話號碼。其他所有人可以撥打 855-258-6518 並等待對話框，直到提示按 0。當代理商接聽時，請說明您需要的語言，然後您將會與翻譯人員聯繫。

توجه (Farsi): این اطلاعیه حاوی اطلاعاتی درباره پوشش بیمه‌ای شما است. ممکن است شامل تاریخ‌های مهم باشد و لازم باشد تا مهلت‌های مشخصی اقدام کنید. شما حق دارید این اطلاعات و کمک را به زبان خود و به صورت رایگان دریافت کنید. اعضا باید با شماره تلفن درج‌شده در پشت کارت شناسایی عضویت خود تماس بگیرند. سایر افراد می‌توانند با شماره 855-258-6518 تماس بگیرند و منتظر بمانند تا دستور داده شود که عدد 0 را فشار دهند. هنگامی که یک نماینده پاسخ داد، زبان مورد نیاز خود را اعلام کنید تا به یک مترجم متصل شوید.

Attention (French): Le présent avis contient des informations essentielles relatives à votre couverture d'assurance. Il peut inclure des échéances importantes nécessitant une action de votre part dans un délai déterminé. Vous avez le droit d'obtenir ces informations ainsi qu'une assistance dans votre langue, et ce, sans frais. Les assurés sont invités à contacter le numéro figurant au verso de leur carte d'adhérent. Toute autre personne peut appeler le 855-258-6518 et patienter jusqu'à l'invitation à composer le 0. Lorsque votre appel sera pris en charge, indiquez la langue souhaitée afin d'être mis en relation avec un interprète.

Achtung (German): Dieser Hinweis enthält Informationen zu Ihrem Versicherungsschutz. Darin sind möglicherweise wichtige Termine aufgeführt und Sie müssen möglicherweise bis zu bestimmten Fristen Maßnahmen ergreifen. Sie haben das Recht, diese Informationen und Unterstützung kostenlos in Ihrer Sprache zu erhalten. Mitglieder sollten die Telefonnummer auf der Rückseite ihres Mitgliedsausweises anrufen. Alle anderen können 855-258-6518 anrufen und den Dialog abwarten, bis sie aufgefordert werden, die 0 zu drücken. Wenn ein Agent antwortet, geben Sie die gewünschte Sprache an und Sie werden mit einem Dolmetscher verbunden.

ध्यान दें (Hindi): इस नोटिस में आपके बीमा कवरेज के बारे में जानकारी है। इसमें महत्वपूर्ण तिथियां हो सकती हैं और आपको निश्चित समय सीमा तक कार्रवाई करनी पड़ सकती है। आपको यह जानकारी और सहायता अपनी भाषा में निःशुल्क प्राप्त करने का अधिकार है। सदस्यों को अपने सदस्य पहचान पत्र के पीछे दिए गए फ़ोन नंबर पर कॉल करना चाहिए। अन्य सभी लोग 855-258-6518 पर कॉल कर सकते हैं और 0 दबाने का संकेत मिलने तक संवाद की प्रतीक्षा कर सकते हैं। जब कोई एजेंट उत्तर दे, तो वह भाषा बताएं जिसकी आपको आवश्यकता है और आपको दुभाषिया से जोड़ा जाएगा।

Leruoanya (Igbo): ọkwà a nwere ozi bànyéré mkpuchi megide ihe mberede gị. Ọ nwere ike inwe ụbọchị ndi dị óké nkpà ma o nwekwara ike idị mkpa ka imee ihe tupu oge ụfọdụ agafee. Inwere ikike inweta ozi a ya na enyemaka na asụsụ gị n'akwụghị ụgwọ ọbụla. Ndi ọtù ga akpọ ọnụọgụgụ ekwenti dị na àzụ Káàdị njirimara ndi ọtù ha. Ndi ọzọ nile nwere ike ịkpọ 855-258-6518 ma chere geruo mkparịta ụka ruo mgbe asi ha pịa 0. Mgbe onye ozi zara, kwuo asụsụ ichọrọ, a ga ejikota gị na onye ntughari asụsụ.

Attenzione (Italian): Questa informativa contiene informazioni sulla copertura assicurativa. Potrebbe contenere date importanti e potrebbe essere necessario intraprendere azioni entro determinate scadenze. È possibile ottenere queste informazioni e assistenza nella propria lingua gratuitamente. I membri sono pregati di chiamare il numero di telefono riportato sul retro del proprio tesserino di riconoscimento. Tutti gli altri possono chiamare il numero 855-258-6518 e rimanere in linea fino a quando non viene richiesto di premere 0. Quando un operatore risponde, è necessario indicare la lingua desiderata per essere messi in contatto con un interprete.

주의 (Korean): 이 고지에는 귀하의 보험 적용 범위에 대한 정보가 포함되어 있습니다. 여기에는 주요 날짜가 포함되어 있을 수 있으며, 특정 마감일까지 조치를 취해야 할 수도 있습니다. 귀하의 비용 없이 귀하의 언어로 이러한 정보와 지원을 받을 권리가 있습니다. 회원은 회원증 뒷면에 있는 전화번호로 전화하시기 바랍니다. 회원이 아닌 모든 분들은 855-258-6518 로 전화하여 안내 메시지가 끝날 때까지 기다렸다가 0 을 눌러주세요. 상담원이 통화에 응답했을 때, 필요한 언어를 말씀하시면 통역사와 연결됩니다.

Baa'ákonínizin (Navajo): Díí bee íł hane'í béeso nich'ááh naa'nil bee ník'é'ásti'í bódahólníhgo bee baa dahane'í biyi'. Dayookáí dóo bee ida'ii' aahí háidíí shíí t'áa bich'í'jii' ha'át'íshíí ádadiilííígíí biyi'. Díí bee baa dahane'í dóo t'áa jiik'eh nizaad bee nika'e'eyeedgo bee ná'ahoot'í'. Bii hada'dít'éhí binaaltsoos nít'ízhí bee béédahóziní baaq béesh bee hane'í námboo biká'ígíí yee dahalne' dooleef. Nááná ła' 855-258-6518 yee dahalne' dóo yálti'í biba' asdáago niléí ó bii adílchííí hodoo'niidjii'. Naalnishí haadzíí'go, saad nínizinígíí bee bii hodíilnih dóo ata' yálti'í bich'í' ni'doolnih.

ध्यान दिनुहोस् (Nepali): यस सूचनामा तपाईंको बीमा कभरेजका बारेमा जानकारी समावेश छ। यसमा प्रमुख मितिहरू हुन सक्छन् र तपाईंले निश्चित समयसीमा भित्र कारबाही गर्नुपर्ने हुन सक्छ। तपाईंलाई यो जानकारी र सहयोग तपाईंको भाषामा निःशुल्क प्राप्त गर्ने अधिकार छ। सदस्यहरूले आफ्नो सदस्य परिचयपत्रको पछाडि रहेको फोन नम्बरमा कल गर्नुपर्छ। अरु सबैले 855-258-6518 मा कल गर्न सक्छन् र ० पुश गर्न प्रेरित नभएसम्म संवादको प्रतीक्षा गर्न सक्छन्। एजेन्टले जवाफ दिँदा, तपाईंलाई चाहिने भाषा बताउनुहोस् र तपाईंलाई दोभाषेसँग जोडिने छ।

Atenção (Portuguese): Este aviso contém informações sobre a cobertura do seu seguro. Ele pode conter datas importantes e você pode precisar tomar medidas dentro de determinados prazos. Você tem o direito de obter essas informações e assistência em seu idioma, sem nenhum custo. Os associados deverão ligar para o número de telefone indicado no verso do seu cartão de identificação de associado. Todos os outros podem ligar para 855-258-6518 e aguardar a mensagem até que seja solicitado a pressionar 0. Quando um agente atender, indique o idioma que você precisa e você será conectado a um intérprete.

Внимание (Russian): В настоящем уведомлении содержится информация о вашем страховом покрытии. Оно может содержать ключевые даты, и вам может потребоваться предпринять действия к определенным срокам. Вы имеете право получить эту информацию и помощь на своем языке бесплатно. Членам профсоюза следует звонить по номеру телефону, указанному на обратной стороне их удостоверения личности. Все остальные могут звонить по номеру 855-258-6518 и дождаться диалога, пока не появится предложение нажать 0. Когда агент ответит, назовите нужный вам язык, и вас соединят с переводчиком.

Fa'alogo (Samoan): O leni fa'aaliga o lo'o iai fa'amatalaga i vaega e kava e lau inisiua. E ono aofia ai aso taua ma atonu e te mana'omia ai le faia o se gaoioga i nisi taimi fa'agata. E iai lau aia tatau e maua ai nei fa'amatalaga ma fesoasoani i lau gagana e aunoa ma se totogi. E tatau i sui auai ona vili le numera o le telefoni i tua o le latou pepa faamaonia. O isi uma e mafai ona vala'au i le 855-258-6518 ma fa'atali i le talanoaga se'ia fa'atonuina e oomi le 0. A tali mai se so'o upu, fa'aiiloa atu le gagana e te mana'omia ona fa'afeso'ota'i lea o oe i se tagata fa'alilili.

Pažnja (Serbian): Ovo obaveštenje sadrži informacije o vašem osiguranju. Može sadržati ključne datume i možda ćete morati da preduzmete akciju do određenih rokova. Imate prava da dobijete ove informacije i pomoć na vašem jeziku besplatno. Trebalo bi da članovi nazovu telefonski broj na poleđini svoje članske legitimacije. Svi ostali mogu pozvati 855-258-6518 i sačekati automat dok ne dobiju obaveštenje da pritisnu taster "0". Kada se agent javi, navedite jezik koji vam je potreban i bićete povezani s prevodiocem

Atención (Spanish): Este aviso contiene información sobre su cobertura de seguro. Puede contener fechas clave y es posible que deba tomar medidas antes de determinadas fechas límite. Usted tiene derecho a obtener esta información y asistencia en su idioma sin coste alguno. Los afiliados deben llamar al número de teléfono que figura en el reverso de su tarjeta de identificación del afiliado. Todos los demás pueden llamar al 855-258-6518 y esperar el diálogo hasta que se les solicite presionar 0. Cuando un agente responda, indique el idioma que necesita y se conectará con un intérprete.

Atensyon (Tagalog): Ang abisong ito ay naglalaman ng impormasyon tungkol sa saklaw ng iyong insurance. Maaaring naglalaman ito ng mga mahahalagang petsa at maaaring kailanganin mong kumilos ayon sa ilang partikular na mga deadline. May karapatan kang makuha ang impormasyong ito at tulong sa iyong wika nang walang bayad. Ang mga miyembro ay dapat tumawag sa numero ng telepono sa likod ng kanilang member identification card. Ang lahat ng iba ay maaaring tumawag sa 855-258-6518 at maghintay hanggang sa masabihan na pindutin ang 0. Kapag sumagot ang isang ahente, sabihin ang wikang kailangan mo at ikaw ay ikokonek sa isang tagapagsalin.

توجہ (Urdu): اس نوٹس میں آپ کی انشورنس کوریج کے بارے میں معلومات شامل ہیں۔ اس میں کلیدی تاریخیں شامل ہو سکتی ہیں اور آپ کو کچھ آخری تاریخوں تک کارروائی کرنے کی ضرورت پڑ سکتی ہے۔ آپ کو یہ معلومات اور مدد اپنی زبان میں، بغیر کسی قیمت کے حاصل کرنے کا حق ہے۔ ممبران کو اپنے رکنیتی کارڈ کی پشت پر دئے گئے فون نمبر پر کال کرنی چاہیے۔ باقی تمام لوگ 855-258-6518 پر کال کر سکتے ہیں اور 0 دبانے کا اشارہ ملنے تک ڈائیلگ پر انتظار کرنا چاہیے۔ جب کوئی ایجنٹ جواب دیتا ہے تو اپنی مطلوبہ زبان بتائیں اور آپ کا رابطہ ایک مترجم سے کر دیا جائے گا۔

Lưu ý (Vietnamese): Thông báo này có chứa thông tin về phạm vi bảo hiểm của bạn. Nó có thể chứa các ngày quan trọng và bạn có thể cần phải hành động theo thời hạn nhất định. Bạn có quyền nhận thông tin và hỗ trợ này bằng ngôn ngữ của mình mà không mất phí. Các thành viên nên gọi đến số điện thoại ở mặt sau thẻ thành viên của mình. Những người khác có thể gọi đến số 855-258-6518 và chờ qua hội thoại cho đến khi được nhắc nhấn số 0. Khi có nhân viên trả lời, hãy nêu ngôn ngữ bạn cần và bạn sẽ được kết nối với phiên dịch viên.



Family of health care plans

CONNECT WITH US:



The examples provided in this booklet are meant to help you evaluate the benefits we offer. They are not meant to convey the exact terms of any one particular plan and do not create rights not given through the benefit plan. The details of your plan may vary.

The policies may have exclusions, limitations or terms under which the policy may be continued in force or discontinued. For costs and complete details of the coverage, call CareFirst.

Notice of Nondiscrimination and Availability of Language Assistance Services

CareFirst BlueCross BlueShield, CareFirst BlueChoice, Inc. and all of their corporate affiliates comply with applicable federal civil rights laws and do not discriminate on the basis of race, color, national origin, age, disability, or sex.

ATENCIÓN: Si habla español, tiene a su disposición servicios gratuitos de asistencia lingüística. Llame al 855-258-6518.

注意：如果您使用繁體中文，您可以免費獲得語言援助服務。請致電 855-258-6518。

This well-being program is administered by Sharecare, Inc., an independent company that provides health improvement management services to CareFirst members. Sharecare, Inc. does not provide CareFirst BlueCross BlueShield products or services and is solely responsible for the health improvement management services it provides.

CareFirst BlueCross BlueShield is the shared business name of CareFirst of Maryland, Inc. and Group Hospitalization and Medical Services, Inc. CareFirst BlueCross BlueShield Medicare Advantage is the business name of CareFirst Advantage, Inc. CareFirst BlueCross BlueShield Community Health Plan District of Columbia is the business name of Trusted Health Plan (District of Columbia), Inc. In the District of Columbia and Maryland, CareFirst MedPlus is the business name of First Care, Inc. In Virginia, CareFirst MedPlus is the business name of First Care, Inc. of Maryland (used in VA by: First Care, Inc.). CareFirst of Maryland, Inc., Group Hospitalization and Medical Services, Inc., CareFirst Advantage, Inc., Trusted Health Plan (District of Columbia), Inc., CareFirst BlueChoice, Inc., First Care, Inc., and The Dental Network, Inc. are independent licensees of the Blue Cross and Blue Shield Association. BLUE CROSS®, BLUE SHIELD® and the Cross and Shield Symbols are registered service marks of the Blue Cross and Blue Shield Association, an association of independent Blue Cross and Blue Shield Plans.